

# PHOTO-ME BY STARCK®

Where design meets technology!



Photo-Me  
BY  
S+ARCK®

Photo-Me

Photomaton®  
Groupe Photobit

KIS  
Photo-Me Group

Prontophot®  
Photo-Me Group

FOTOFIX®  
Photo-Me International Group

PRONTO♦PHOT Foto-Já!

# PHOTO-ME BY STARCK®

## The photobooth of the future!

### DESIGNER SEAT

This translucent seat with LED lighting creates a comfortable atmosphere and can accommodate 1 or 2 people. It remains in a fixed position, the camera automatically adapts to the user.

### EXTERNAL DIGITAL 32" SCREEN WITH DYNAMIC DISPLAY

Digital signage can be used on the external screen to display different messages in a rotational sequence to promote ID photos and fun products. The dynamic display screens can be easily personalised and updated in just a few clicks.

### EASY NAVIGATION USING THE 17" TOUCH SCREEN

The user-friendly interface, the touch screen and the audio guidance available in several languages, help customers to quickly achieve their desired photo.

### ACCESSIBILITY

There is a grab bar option for people with reduced mobility

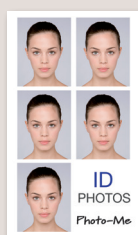
### PASSPORT PHOTO STANDARDS

■ Our ID & VISA photos conform to the ICAO (International Civil Aviation Organization) standards with the exclusive patent "ID-Photo Booth ®."

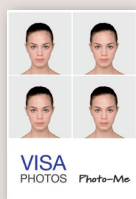


■ Technology WYSIWYG (What You See Is What You Get) allows the user to see the photo on the screen corresponding to its appearance when printed.

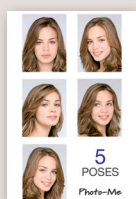
## PRODUCTS ISSUED



Passport Photos



VISA Photos



5 poses



CV Photos Colour and B&W



Portrait Photos Colour and B&W



Fun Photos



## Technical Specifications

- **Camera** : 5 million pixels
- **Printing** : One dye-sub thermal printer
- **Resolution** : > 300 dpi
- **Print speed** : 8 seconds
- **Print format** : 10x15 cm
- **Capacity** : 600 prints per printer
- **Consumables** : Roll thermal photo paper, dye sublimation ink ribbon
- **Payment options** : Coin and bill acceptor with/without change giver and optional credit card reader
- **Internal lighting** : High power LED

lighting for camera settings and low powered LED for mood lighting

### ■ Dimensions :

No top sign: 192 (H) x 150 (W) x 75 (D) cm

With top sign: 218 (H) x 150 (W) x 75 (D) cm

### ■ Weight : 400 kg

### ■ Consumption : Standby mode 460W, printing mode 690W

### ■ Power supply : 230 V 50 Hz 6 A

### ■ Standards : (In 60950-1 and CEM)



Footprint: 1.125 m<sup>2</sup>



Eco-friendly: Operation: Low consumption bulbs. Stand by system controlled by timers. Disposal: separation techniques and de-pollution process. The recycling of all waste and components used by the machine are dealt with by industry specialists.

**Photo-Me**  
www.photo-me.co.uk

Photo-Me International Plc, Church Road, Bookham, Surrey. KT23 3EU  
Tel: +44 (0) 1372 453 399 Fax: +44 (0) 1372 459 064 @: info@photo-me.co.uk  
Photo-Me Ireland Ltd, 33 Weatherwell Industrial Estate, Clondalkin Dublin, Ireland.  
Tel: +353 1 457 2121 Fax: +353 1 457 2275 @: info@photo-me.ie