

KIS BOOTH

Providing approved identity photos



Photo-Me

Photomaton
Groupe Photobit

KIS
Photo-Me Group

Prontophot
Photo-Me Group

FOTOFIX
Photo-Me International Group

PRONTO PHOT Foto-Já!

KIS BOOTH

Providing approved identity photos

ADAPTIVE SEAT

This adjustable seat enables the customer to manually set the height in order to achieve a compliant photo.

EXTERNAL ADVERTISING

All products available from this photo booth are promoted on the external advertising. The front poster is backlit by energy saving LED lights.

EASY NAVIGATION USING THE 18.5" TOUCH SCREEN

The user-friendly interface, the touch screen and the audio guidance available in several languages, help customers to quickly achieve their desired photo.

ACCESSIBILITY

There is a grab bar option for people with reduced mobility

PASSPORT PHOTO STANDARDS

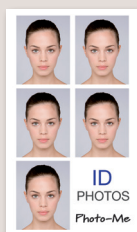


■ Our ID & VISA photos conform to the ICAO (International Civil Aviation Organization) standards with the exclusive patent "ID-Photo Booth®."

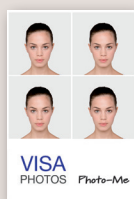
■ Technology WYSIWYG (What You See Is What You Get) allows the user

to see the photo on the screen corresponding to its appearance when printed.

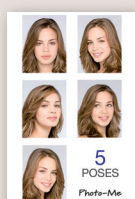
PRODUCTS ISSUED



Passport
Photos



VISA
Photos



5
poses



CV Photos
Colour and B&W



Portrait Photos
Colour and B&W



Fun
Photos



Technical Specifications

- **Camera** : 5 million pixels
- **Printing** : One dye-sub thermal printer
- **Resolution** : 300 dpi
- **Print speed** : 29 seconds per print
- **Print format** : 10x15 cm
- **Capacity** : 700 prints per printer
- **Consumables** : Roll thermal photo paper, dye sublimation ink ribbon
- **Payment options** : Coin mechanism and bill acceptor
- **Screen** : 18.5" touch screen

■ Dimensions :

No top sign : 192 (H) x 150 (W) x 75 (D) cm

With top sign : 218 (H) x 150 (W) x 75 (D) cm

■ Weight : 230 kg

■ **Consumption** : Standby mode 460W,
printing mode 690W

■ Power supply : 230 V 50 Hz 6 A

■ Standards :

(In 60950-1 and CEM)



Footprint: 1.125 m²



Eco-friendly: Operation: Low consumption bulbs. Stand by system controlled by timers. Disposal: separation techniques and de-pollution process. The recycling of all waste and components used by the machine are dealt with by industry specialists.

Photo-Me
www.photo-me.co.uk

Photo-Me International Plc, Church Road, Bookham, Surrey. KT23 3EU
Tel: +44 (0) 1372 453 399 Fax: +44 (0) 1372 459 064 @: info@photo-me.co.uk
Photo-Me Ireland Ltd, 33 Weatherwell Industrial Estate, Clondalkin Dublin, Ireland.
Tel: +353 1 457 2121 Fax: +353 1 457 2275 @: info@photo-me.ie